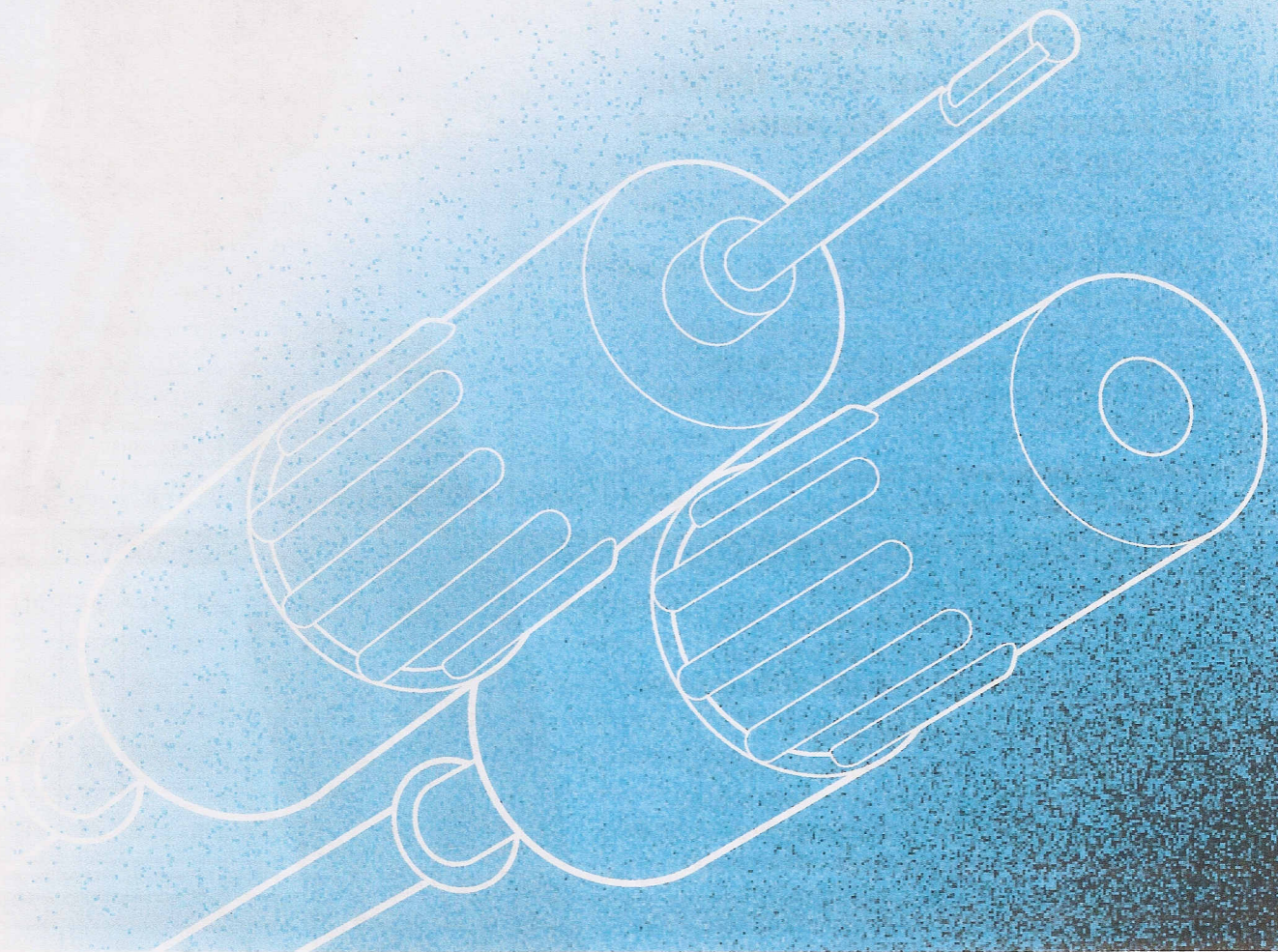


Crouse-Hinds Molded Products Push-Lock Connectors



COOPER

Crouse-Hinds

Quality from
Cooper Industries

Crouse-Hinds® Push-Lock Connectors for heavy load, direct-current applications.

Electrical Parameters

**Single Contact, #2 AWG through
750 MCM Conductor. Up to 120 Volt;
775 Amps; 600 Volt, 425 Amps; 5000
Volt, 540 Amps.**

A highly reliable locking connector developed primarily for heavy load, direct-current applications such as welding or heavy equipment. The Push-Lock Connector provides a low resistance electrical connection that can be locked in place or released with a twist of the wrist. Male and female plugs may be used together in line or mated with easy-to-install terminal back receptacles.

Resilient Neoprene Construction

Neoprene molding over heavy contacts withstands heavy physical abuse; will not shatter, break, or crack.

Quick, Simple Locking Device

A key-way in the male contact engages a pin in the female socket. With a twist of the wrist, the plug locks in place preventing accidental disconnects.

Sealed Against Contaminants

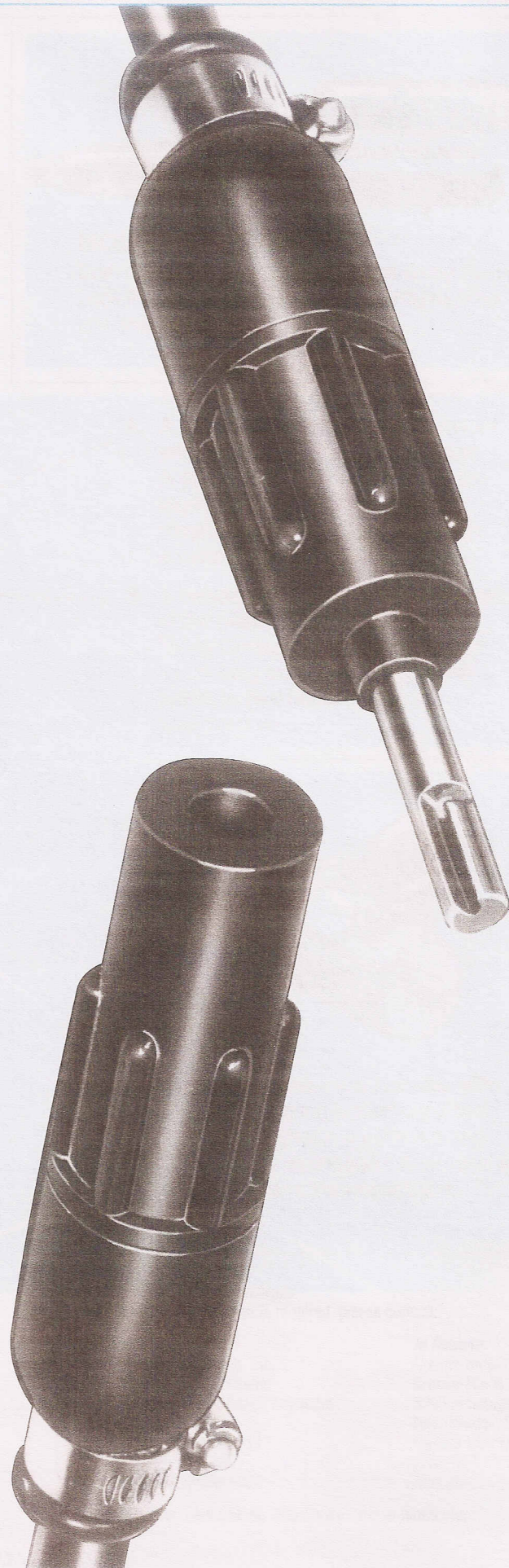
Neoprene shoulder around contact fits tightly into a recess in the female assembly effectively sealing out dust, oil, and water. Molded-to-cable plugs are sealed at the rear by continuous vulcanization to the cable. Attachable designs utilize a tight fitting neoprene sleeve further reinforced by an adjustable metal clamp.

Corrosion Resistant

Neoprene construction is unaffected by common industrial environments such as oils, light acids, and moisture.

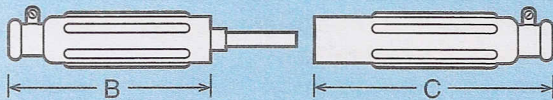
Easy Installation

Receptacles and attachable plugs utilize a terminal back design providing for easy wiring.

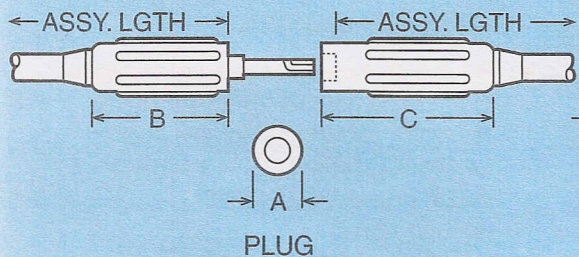


Push-Lock Connectors

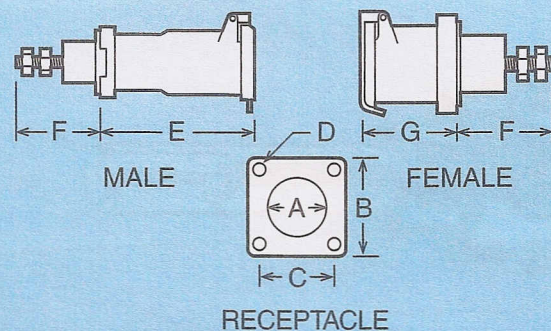
ATTACHABLE



MOLDED-TO-CABLE



WITH COVER

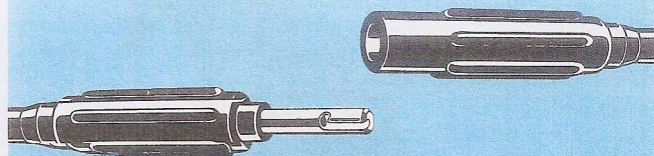


Electrical Data		Dimensions (Approx. Inches)			Part Numbers			Part Numbers									
Max. AWG	Max. Amp.	A	B	C	Assy. Lgth.	Male	Female	Male	Female		A	B	C	D	E	F	G
Attachable 600 volt																	
2	110	1 ³ / ₈	4 ³ / ₄	5 ⁹ / ₁₆	Attach.	X8168-3	X8168-2	X8168-14	X8168-10	Covered	1 ¹ / ₄	1 ¹ / ₂	2	7 ₃₂	4 ⁷ / ₁₆	2 ⁷ / ₁₆	2 ⁷ / ₁₆
2/0	175	1 ⁵ / ₈	5 ⁷ / ₁₆	6 ³ / ₈	Attach.	X8169-3	8169-4	X8169-31	X8169-17	Covered	1 ¹ / ₂	2	2 ⁵ / ₈	9 ₃₂	2 ¹ / ₂	2 ¹ / ₂	2 ¹ / ₂
4/0	235	1 ⁷ / ₈	6 ¹⁵ / ₁₆	7 ³ / ₈	Attach.	X8170-1	X8170-2	X8170-36	X8170-35	Covered	1 ⁵ / ₈	2	2 ⁵ / ₈	9 ₃₂ M 7 ₃₂	5 ¹ / ₂	2 ¹ / ₂	2 ⁷ / ₈
4/0	235	1 ⁷ / ₈	6 ¹³ / ₁₆	9 ⁹ / ₁₆	Attach.	X8567-10	X8567-18		X8567-23	Covered	3 ⁷ / ₁₆	3	4 ¹ / ₁₆	9 ₃₂		8 ⁵ / ₈	1 ¹⁵ / ₁₆
						Male contact shrouded											
For welding applications, the above will carry the same load as those listed below for corresponding wire sizes.																	
Molded to cable up to 125 volt welding																	
2/0	375	1 ¹ / ₈	4 ³ / ₁₆	5 ³ / ₁₆	45"	X8165-4	X8165-5	X8169-31	X8169-17	Covered	1 ¹ / ₂	2	2 ⁵ / ₈	9 ₃₂	5 ¹ / ₂	2 ¹ / ₂	2 ¹ / ₂
4/0	550	1 ³ / ₈	4 ¹ / ₈	5 ³ / ₈	45"	X8166-6	X8166-3	X8170-36	X8170-35	Covered	1 ⁵ / ₈	2	2 ⁵ / ₈	9 ₃₂ M 7 ₃₂	5 ¹ / ₂	2 ¹ / ₂	2 ⁷ / ₈
Molded to cable 5000 volt																	
2	110	1 ³ / ₈	4	4 ¹ / ₄	24"	X8173-1	X8173-2		X8173-13	Covered	1 ¹ / ₂	2 ⁵ / ₈	2	9 ₃₂	2 ¹⁷ / ₃₂	2 ¹ / ₂	
2/0	175	1 ⁵ / ₈	4 ¹ / ₈	5 ¹ / ₄	18"	X8174-4	X8174-3										

NOTE: Refer to price list for identification of stock items.

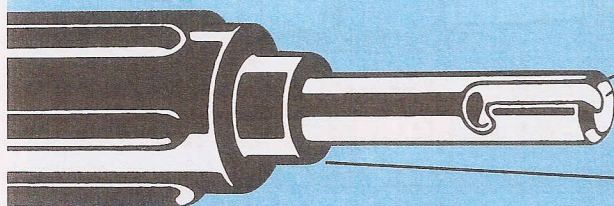
Typical Applications

- Welding leads
- Portable distribution centers
- Heavy mobile equipment
- Power shovels



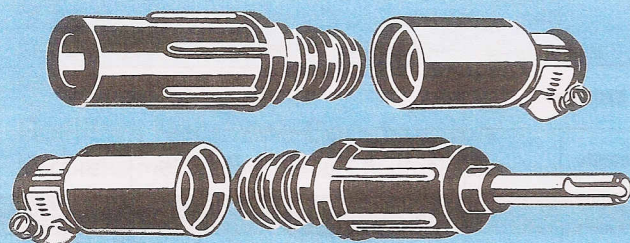
MOLDED-TO-CABLE

Both the 125 Volt and the 5000 Volt rating Push Lock Plugs are furnished permanently molded to a short length of cable.



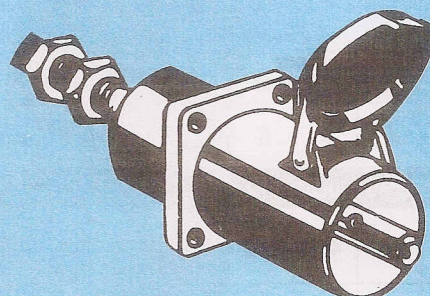
A. A slotted key-way in the male contact engages a pin in the female socket. A slight twist of the wrist locks them together into a positive, vibration-proof connection that can't become accidentally disengaged.

B. A neoprene shoulder around the base of the male contact fits tightly into a recession around the female socket functioning similar to a "cork in the bottle" to seal out dirt, dust, and moisture.



ATTACHABLE TYPE

The 600 Volt rating Push Lock is offered as an attachable unit. It can be assembled to any desired length of cable by the user. The conductor is secured into the contact chamber by a set screw. The wiring area is then sealed by a neoprene sleeve and an adjustable clamp assures a positive fit between sleeve and cable.



HINGED COVER

Predrilled, cast receptacles are available with protective caps. The spring-loaded caps seal the interior of the receptacle against dirt and dust when the plug is disengaged. A terminal back wiring arrangement simplifies installation.

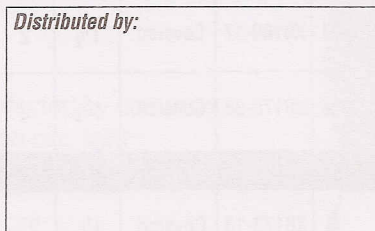


Crouse-Hinds

Quality from
Cooper Industries

Crouse-Hinds reserves the right to alter or improve the design or construction of its products and to furnish them, when so altered, without reference to the illustrations or descriptions in this bulletin.

Distributed by:



For more information:

If further assistance is required, please contact:

In U.S.:

Cooper Industries, Inc.
Crouse-Hinds Division
Crouse-Hinds Molded Products
Route 4, Box 156
LaGrange, NC 28551
(919) 566-3014
FAX: (919) 566-9337

In Canada:

Cooper Industries, Inc.
Crouse-Hinds Canada
5925 McLaughlin Road
Mississauga, Ontario
Canada L5R 1B8
(905) 507-4187
FAX: (905) 501-4078

Visit our web site at: <http://www.crouse-hinds.com>

World Class. World Wide.™

Crouse-Hinds is a registered trademark of Cooper Industries, Inc.
© 1996 Cooper Industries, Inc.

Printed in U.S.A.